



The 'Solid State' SCSIFlash-Tape Emulator replaces legacy SCSI tape drives, using removable Compact Flash to replace the reel-to-reel tape or cartridge tape media.

## 3.5" & 5.25" Form Factor

Network back-up and restore capability enables vital data back-ups to be made as a complete image of its CompactFlash card and transferred via an Ethernet network to be stored remotely from the legacy equipment and restored as and if needed. Universal TCP is used for disk image transfers with remote execution of back-up and restore configuration operations controlled by SSDL FLASH2GUI API.

## DESCRIPTION

The SCSIFlash-Tape is a programmable hardware emulator that uses standard industrial Compact Flash card technology to provide a solid state, drop-in replacement for obsolete electromechanical tape drives using the SCSI interface. The SCSIFlash-Tape will replace the popular DDS DAT, DLT and Pertec tape drives on a variety of host systems.

The SCSIFlash-Tape product allows OEMs and service providers to have a quick, cost efficient solution to support their legacy system. The product's configurable firmware allows a perfect host match, eliminating the need for any host hardware or software changes.

### Benefits

- Host hardware and software compatible.
- No software updates / integration required to the host – 'Plug & Play'
- Fast efficient field replacement
- Lower power consumption, noise and heat
- Greatly increased reliability (MTBF) and media life
- Reduction in unplanned downtime
- Fast recovery after crash or CPU fail.
- Provides ability to extract backup image file and store folders on a PC
- Significantly faster browsing of directories such as old message logs, change logs and file recipes

### Network Feature Benefits

- Network enabled SCSIFLASH drive has its own IP address (configurable)
- Network enabled SCSIFLASH allows bit for bit image backup & restore direct to LAN
- Provides ability to import & move files between hosts systems / tool easily
- SCSIFlash™ proprietary FLASH2GUI API software drive offers the ability to edit backup files on a PC, add remove files, repack, and transfer back to the host via the SCSIFlash drive

## FEATURES

- Small standard footprint (3.5") allows replacement of any 3.5" tape drive, or any larger drive with an additional adaptor chassis. SCSIFlash-Tape will fit in any standard tape drive slot using the same fixings.
- Requires a single 5 Volt power supply
- Firmware is field upgradeable via integral USB or through the RJ45 port
- Optional network backup and restore capability via Ethernet port
- Optional integration support, as required

Solid State Disks Ltd manufacture, design & support sales of the SCSIFlash-Tape™ drive through our head office in Reading, United Kingdom.

The SCSIFlash™ is a recognised Trademark of Solid State Disks Ltd.

**Solid State disks**  
LTD

Solid State Disks Ltd  
The Granary  
Hose Hill  
Sulhamstead  
Berks  
RG7 4BB  
United Kingdom  
Tel: +44 (0) 118 9323 499  
Fax: +44 (0) 118 9323 510  
Email: sales@solidstatedisks.co.uk  
web: www.solidstatedisks.co.uk

## SPECIFICATIONS



### Dimensions:

3.5" SCSI tape form factor – 102mm (4") wide x 147mm (5.75") long x 25mm (1") high  
(Note: There is an 8.5mm CF projection from the front panel)

5.25" enclosure options

### Compact Flash Connection:

Standard 3M header, with ejector, for Type 1 and 2 cards.

### Power Requirement:

5 Volts only @ 3 Watts (Typical), with CF fitted. Connector matches tape drive emulated.

### Data Connection:

Standard narrow SCSI-1 and 2, 50 pin DIL 0.1" connector at the rear of the SCSIFlash-Tape chassis.

### Data Transfer Rate:

Up to 6 Mbytes /second sustained (Note: May be host or application limited)

### USB Port

Used for microcode load, real time diagnostics, and unit configuration.

### Example Tape Drive Emulations:

Archive Viper 150, Archive Python 4320, DEC TZ86, TZ87 and TZ8, DEC TLZ06, TLZ07, TLZ09, TLZ10 and TLZ88, DEC TK50 and TK7, DEC TZK9, TK10 and TK11, DDS DAT, DLT and Pertec drives - HP C1533 / C1539, HP/DEC "Storage Works" tape drives, QIC, Seagate STD22400N, Seagate SDT11000.

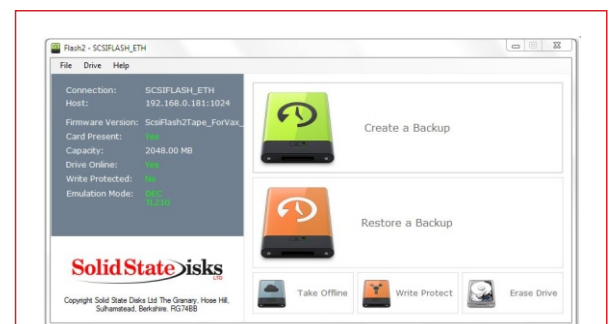
### Host Examples :

Alcatel-Lucent 5ESS HP C1533 / C1539, DEC VAX 400, VAX station 4000-90A, VS4000, uVAX and MicroVAX, IBM RS6000™ iSeries AS400, HP 9000 / HP 715, Ericsson AXE-10, Nortel DMS-10 NTJIT69A, NEC NEAX SIGMA 61E / 61S, Siemens EWSD HP88781AA / HP2940A, Stromberg-Carleson DCO SDT-11000, Telebras Tropic.

### Operating System Examples:

HP/DEC VMS, iRMX HI CLI, Multiple other proprietary OEM O/S, Unix OS

Note that the above product names are the trademarks of the companies listed.



SCSIFlash-Tape™ configurable firmware